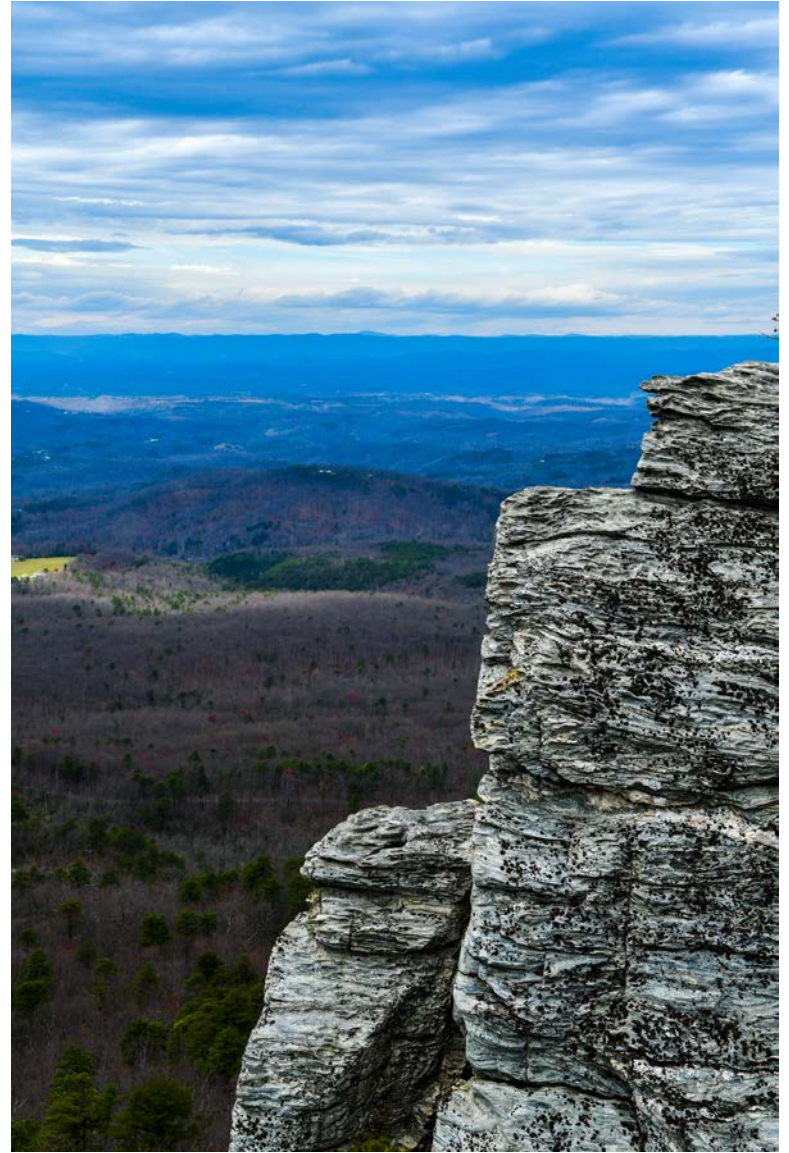


# LVC

COMPANIES

FIRE PROTECTION

SYSTEMS INTEGRATION



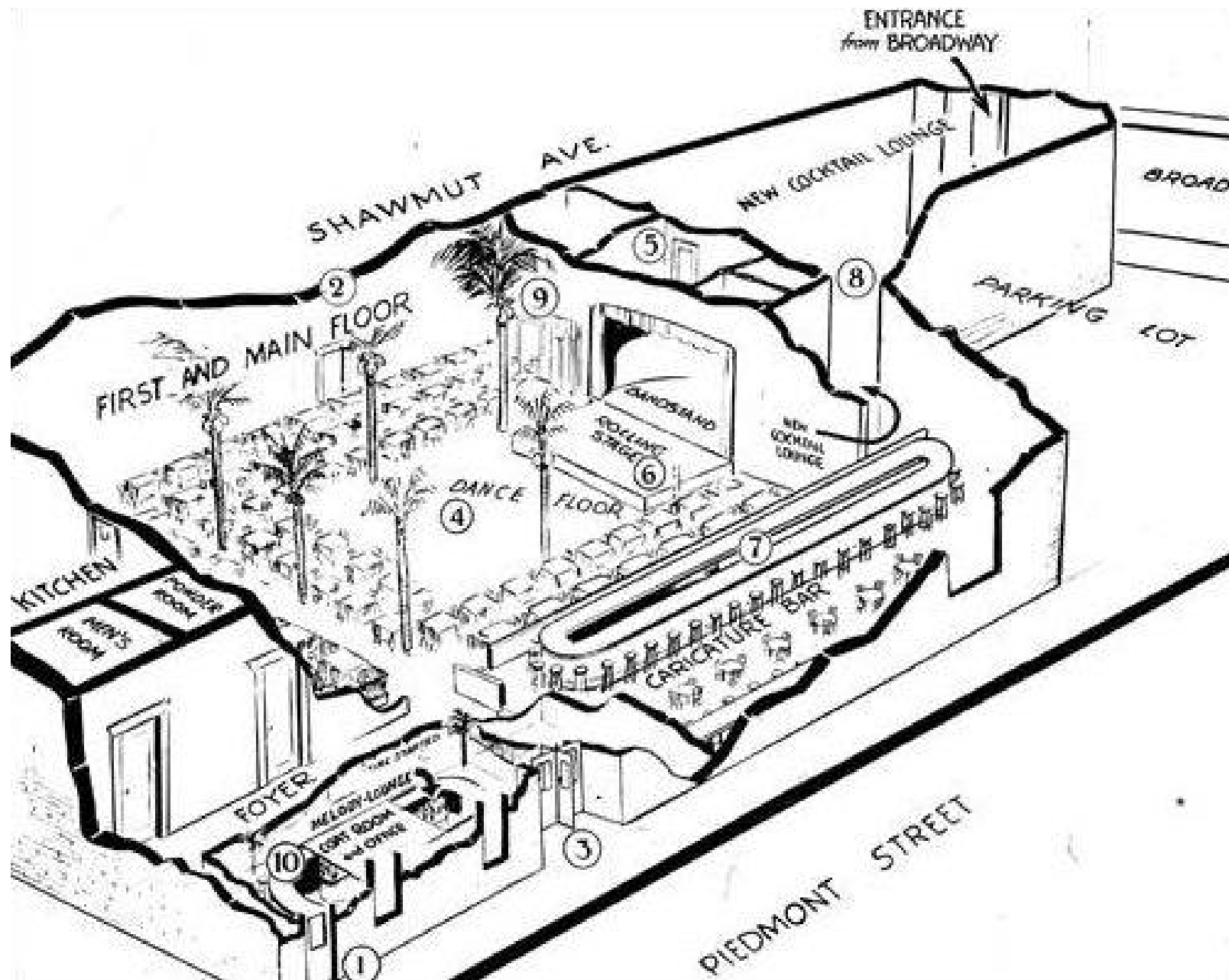


# Cocoanut Grove Fire - November 28, 1942



# Building Facts

- Built 1916
- Reinforced Concrete
- 10,250 square feet.
- Multiple buildings and floors
- Multiple uses over the years.
- Opened as a nightclub in 1927 & was granted a restaurant license in 1942
- 100 tables, 400 chairs, 30 fixed stools
- Occupancy = 460 - 600
- Owners – Mickey Albert, Charles “King” Soloman, Barney Welansky









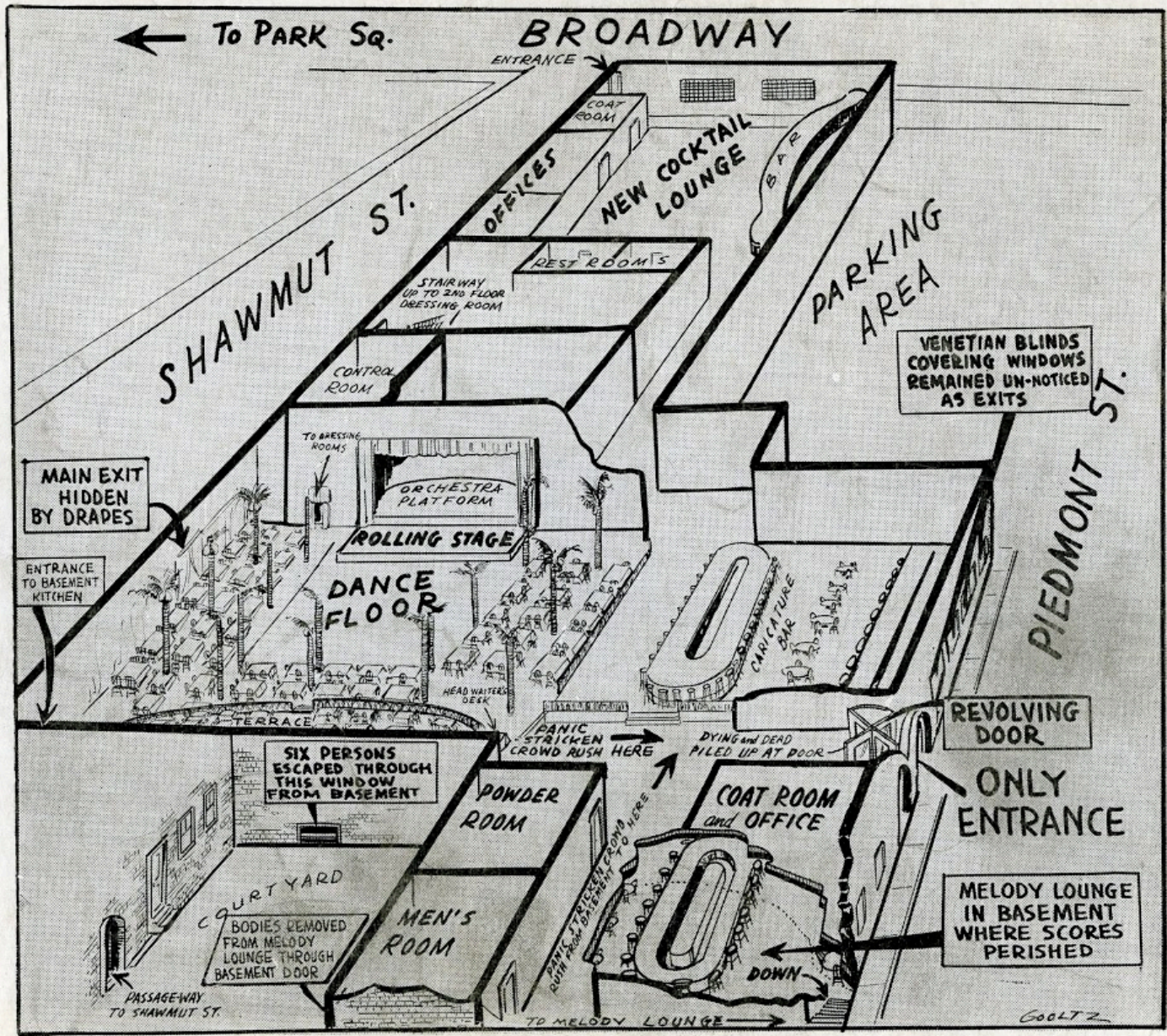












MAIN EXIT HIDDEN BY DRAPE

ENTRANCE TO BASEMENT KITCHEN

SIX PERSONS ESCAPED THROUGH THIS WINDOW FROM BASEMENT

BODIES REMOVED FROM MELODY LOUNGE THROUGH BASEMENT DOOR

PANIC STRICKEN CROWD RUSH HERE

DYING AND DEAD PILED UP AT DOOR

PANIC STRICKEN CROWD RUSH HERE

VENETIAN BLINDS COVERING WINDOWS REMAINED UN-NOTICED AS EXITS

REVOLVING DOOR

ONLY ENTRANCE

MELODY LOUNGE IN BASEMENT WHERE SCORES PERISHED

COULTZ



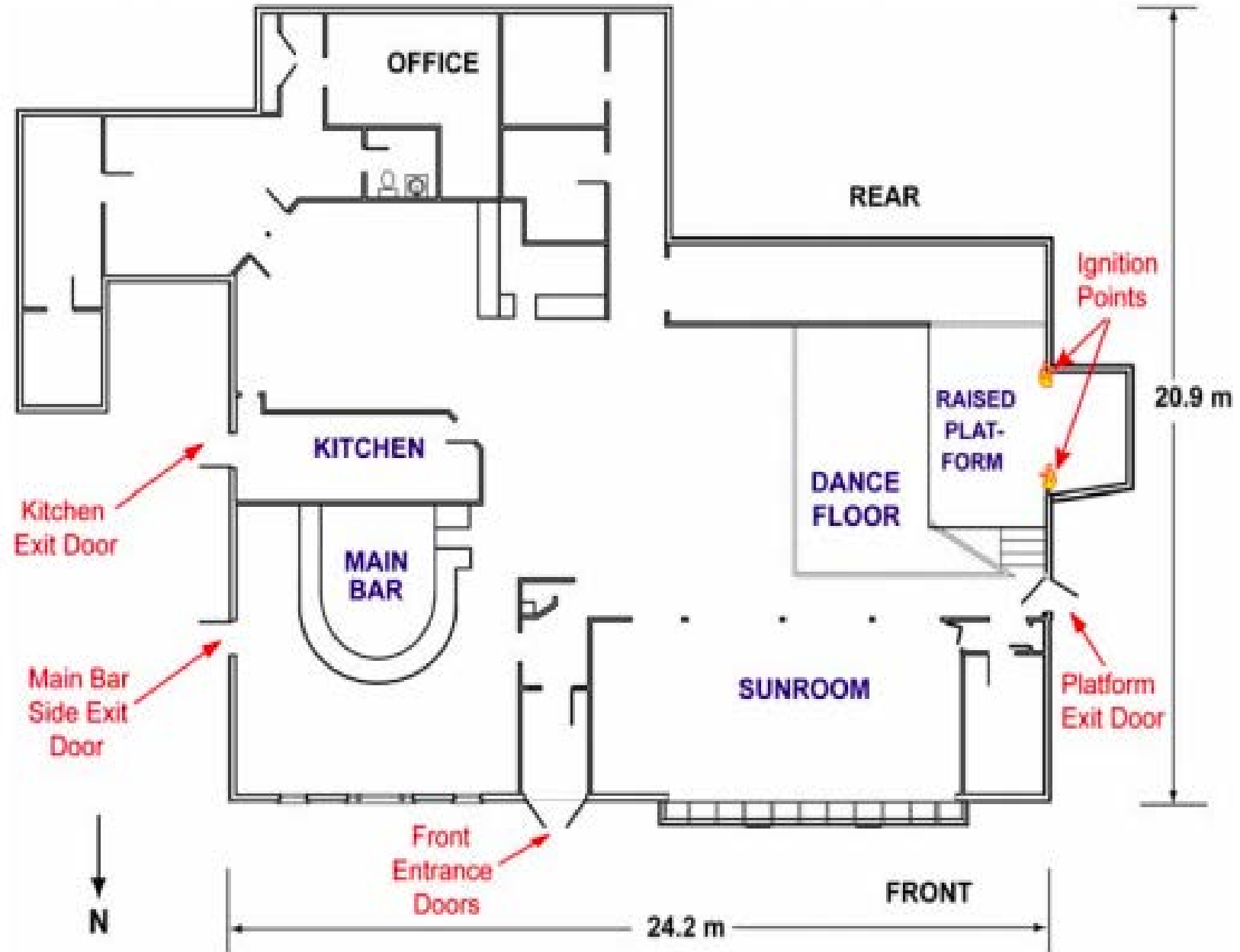
# THE STATION NIGHTCLUB FIRE - FEBRUARY 20, 2003



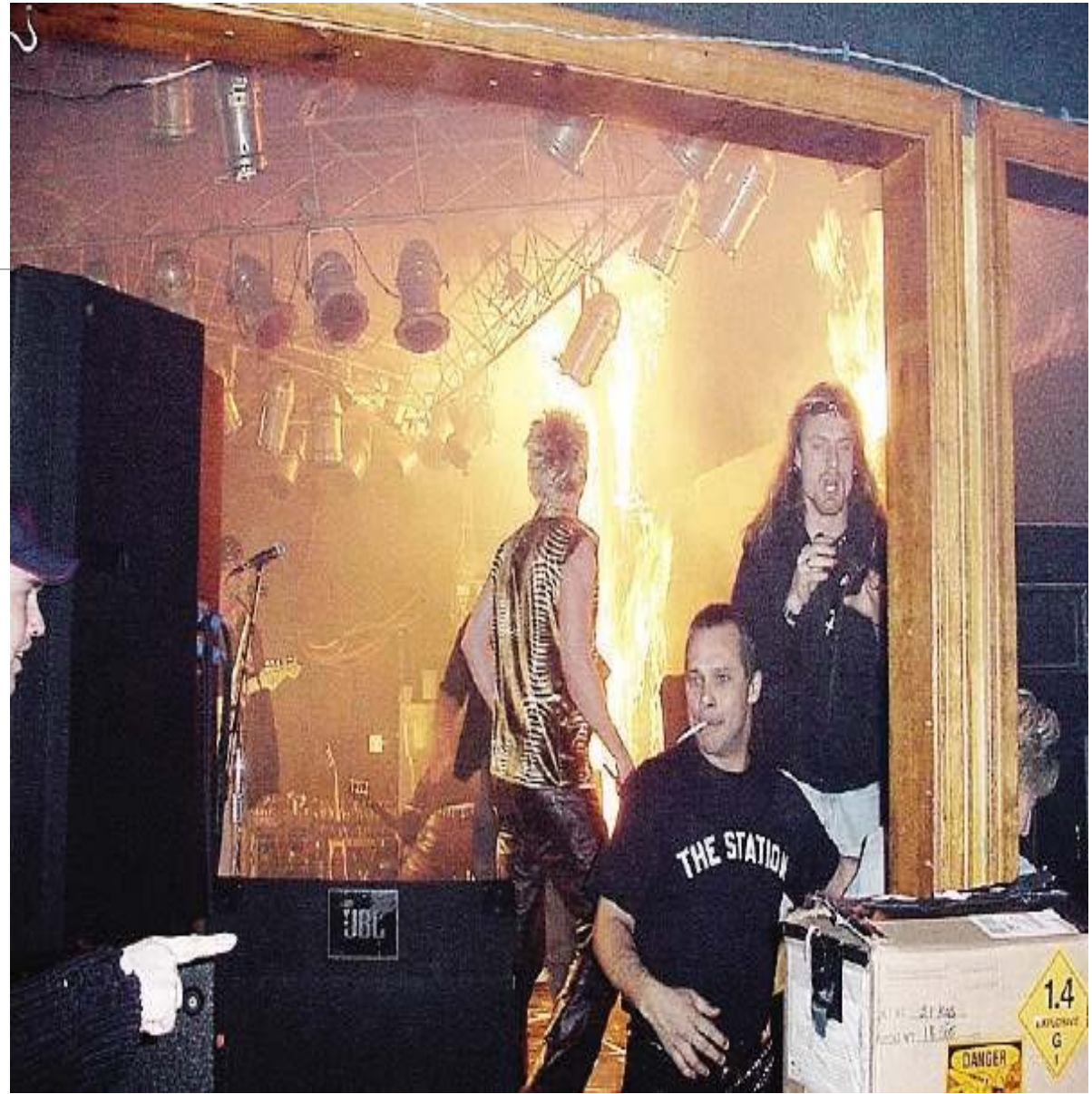


# Building Facts

- Single Story
- Wood frame construction
- 4,500 square feet
- Built in 1946
- West Warwick, Rhode Island
- Fire Alarm System
- Non-sprinklered
- From Restaurant to Night Club
- Occupancy Load = 402
- Owners Jeffrey & Michael Derderian











THE  
STATION  
LIVE MUSIC

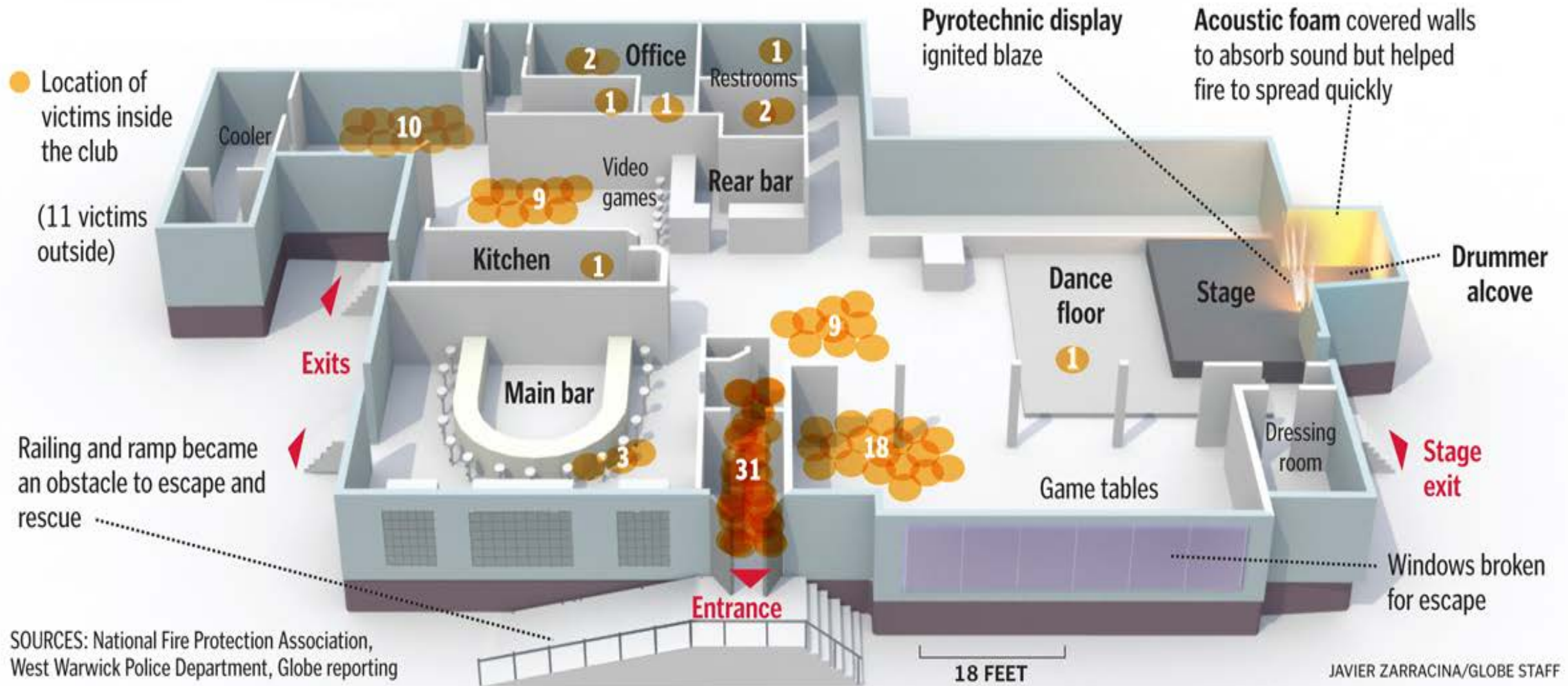
THE GREAT WHITE  
3 THROUGH THE  
SAT 4 BANDS  
SUN THE ONE







# After the Fire



# FINE LINE MUSIC CAFÉ

- 100 year old building – Warehouse District, Minneapolis, MN
- February 17, 2003 – pyrotechnics lit the ceiling on fire.
- Staff safely guided everyone out.
- Sprinkler system activated
- Extensive smoke, water and fire damage.





*“Good judgement comes from experience, and experience – well, that comes from poor judgement.”*

*A. A. Milne*



# Recommendations & Changes Made

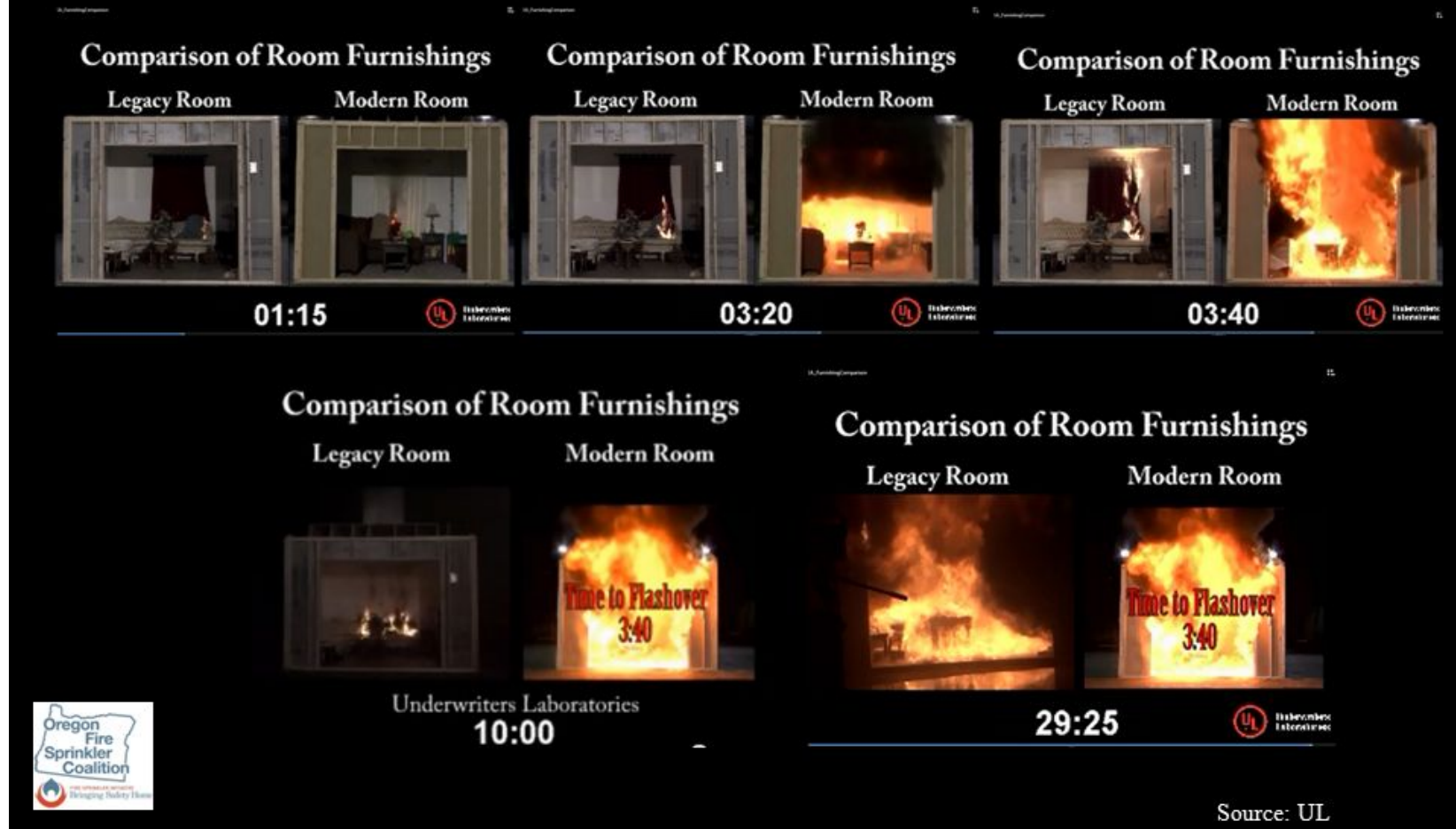
- Mandated sprinkler systems
- Egress paths, aisles, and corridors
- Revolving doors
- Use of basement spaces
- Enclosed stairwells & Fire doors
- Smoke & Heat vents
- Exit lighting
- Event staff training & Evacuation drills
- Use of pyrotechnics
- Increased code enforcement
- Ceiling and wall decorations
- Improved burn treatment
- Improved research & behavior models



# That Was Then... This Is Now!

- Natural vs. Synthetic
- Smoke as a fuel source
- Increased fire growth
- Quicker “flashover”
- Decreased Survivability

## 1970s vs. Current Fuel Loads



Source: UL







**1,000  
DEGREES**

**100  
DEGREES**



# Thank You!



Jim Oelhafen  
Service Sales Supervisor  
M: 952-292-1017  
D: 952-278-1075  
[www.LVCinc.com](http://www.LVCinc.com)