

Maintaining and Protecting Your Concrete Floors

CONCRETE

Why Protect Concrete Floors?

**What if your Concrete Floor is
already damaged,
deteriorating, or defective?**











**What are the challenges in
applying concrete floor
coatings?**

A. Analyzation

B.

C.

D.

E.

Analysis:

to determine essential elements,
examine critically so as to bring out
the important elements



 **BASF**

The Chemical Company



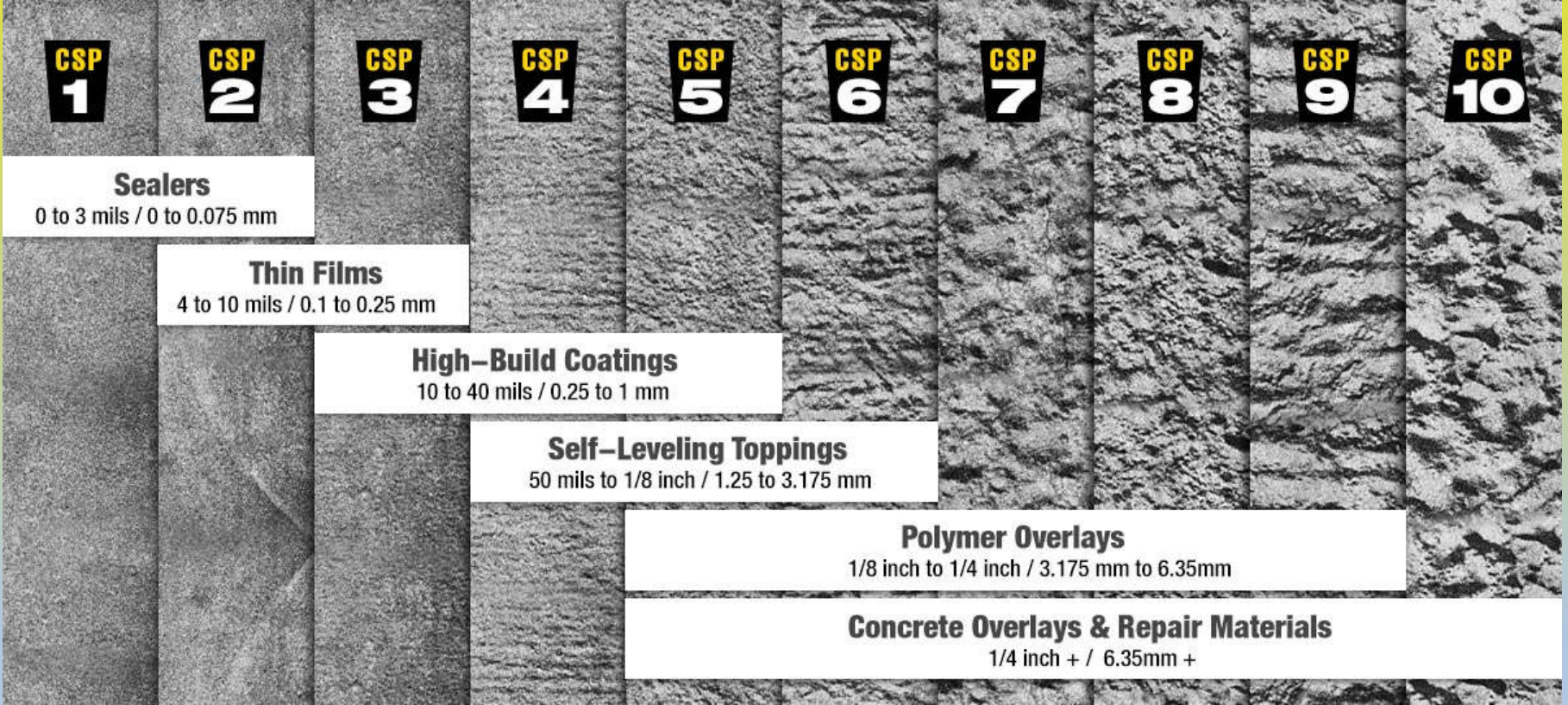
A. Analyzation

B. Prep, Prep, Prep.

C.

D.

E.



CSP
1

CSP
2

CSP
3

CSP
4

CSP
5

CSP
6

CSP
7

CSP
8

CSP
9

CSP
10

Sealers

0 to 3 mils / 0 to 0.075 mm

Thin Films

4 to 10 mils / 0.1 to 0.25 mm

High-Build Coatings

10 to 40 mils / 0.25 to 1 mm

Self-Leveling Toppings

50 mils to 1/8 inch / 1.25 to 3.175 mm

Polymer Overlays

1/8 inch to 1/4 inch / 3.175 mm to 6.35mm

Concrete Overlays & Repair Materials

1/4 inch + / 6.35mm +





**BEFORE
SHOT BLASTING**

The image shows a side-by-side comparison of a concrete surface. The left side, labeled 'BEFORE SHOT BLASTING', shows a smooth, greyish-brown concrete surface with a fine, uniform texture. The right side, labeled 'AFTER SHOT BLASTING', shows the same concrete surface after being treated with shot blasting. The surface is significantly more textured and rough, with numerous small, light-colored particles and aggregates exposed, creating a porous appearance. The text is overlaid in bold, white, italicized font with a black outline.

**AFTER
SHOT BLASTING**

Before

After



Vacuums? Or Dust Collectors

OSHA[®] FactSheet

Workers' Exposure to Respirable Crystalline Silica: Final Rule Overview

More than 2 million workers gain protections from deadly dust



A. Analyzation

B. Prep, Prep, Prep.

C. Choosing the right primer

D.

E.

- *Water-based
- *Solvent-based
- *Oily Substrates
- *Quick cure

Solutions for moisture mitigation:

1. Moisture Vapor Barrier Systems
2. Breathable Coatings

MasterTop® VB 240FS

Fast setting, moisture vapor barrier system
for use with resinous floor coatings

YIELD

Approximately 100 ft²/gallon (2 m²/L)
depending upon porosity of the substrate

PACKAGING

10 Gallon (38 L) Kit
Cart.A: 5 gallons (19 L) (flex) |
Cart.B: 5 gallons (19 L) (hardener)

100 Gallon (378 L) Kit

Cart.A: 50 gallons (189 L) (flex) |
Cart.B: 50 gallons (189 L) (hardener)

COLOR

Dries clear

SHELF LIFE

2 years when properly stored

STORAGE

Store in unopened containers at 60 –
80° F in clean, dry conditions. Protect
from freezing and keep away from heat.

VOC CONTENT

0 g/L, less water and exempt solvents
when components are mixed and applied
per BASF instructions

DESCRIPTION

MasterTop VB 240FS is a fast setting, 100% solids epoxy moisture mitigation system for use with resinous flooring systems. MasterTop VB 240FS reduces the permeance of moisture vapor through concrete substrates to levels that are acceptable for the installation of resinous floor coatings. When used in conjunction with BASF seamless flooring systems including MasterTop MMA and epoxy systems, MasterTop VB 240FS helps provide a durable, sanitary flooring solution that can be customized to meet the specific needs of each facility.

PRODUCT HIGHLIGHTS

- Rapid curing, minimizes facility down time
- Compatible with MasterTop Flooring Systems, enables customized, durable solutions
- One coat application helps reduce labor required
- 1:1 mix ratio by volume simplifies application
- 100% solids formulation, environmentally friendly
- Can be applied to 7-day-old concrete for faster job completion
- Can be applied to concrete with high alkalinity (pH of 13-14), provides greater flexibility for new construction projects

APPLICATIONS

- Where vapor drive of porous concrete surfaces needs to be controlled
- Concrete floors and slabs with a compressive strength of at least 2500 psi
- Where moisture vapor transmission of substrate falls between 3 lbs and 15 lbs per 1000 ft² over 24 hours using calcium chloride test per ASTM F 1869
- Where the relative humidity of the concrete substrate is between 75% and up to 99% per ASTM F 2170 or F 2420 according to the type of application listed on the chart below.

TYPICAL PROPERTIES

RH LEVEL	UP TO 97%	99%
----------	-----------	-----

NEW CONSTRUCTION

Elevated Slab	•
Slab On Grade*	•
Below Grade Slab*	•

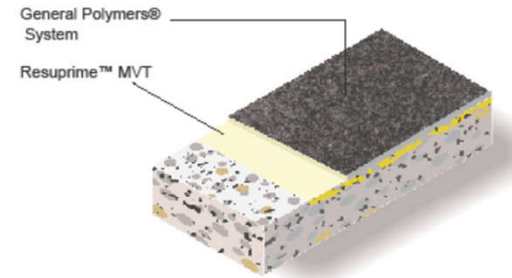
EXISTING CONSTRUCTION

Elevated Slab	•
Slab On Grade	•
Below Grade Slab	•



Resuprime™ MVT

Resuprime™ MVT is a fast curing, two-component, epoxy resin that is tolerant of residual moisture in concrete floors and walls. This enables earlier access onto new concrete substrates for the application of General Polymers® systems. Resuprime MVT is formulated to prevent moisture related disbondment of non-permeable resinous systems.



Advantages

- Moisture insensitive to 15 lbs or 97% RH
- Withstands vapor emissions
- Low odor
- Excellent adhesion

Uses

- For impermeable flooring and wall systems
- Use when moisture readings are less than 15 lbs, as measured by ASTM F 1869 or less than 97% relative humidity as measured by ASTM F 2170.
- Can be applied to saturated surface dry (SSD) concrete

Limitations

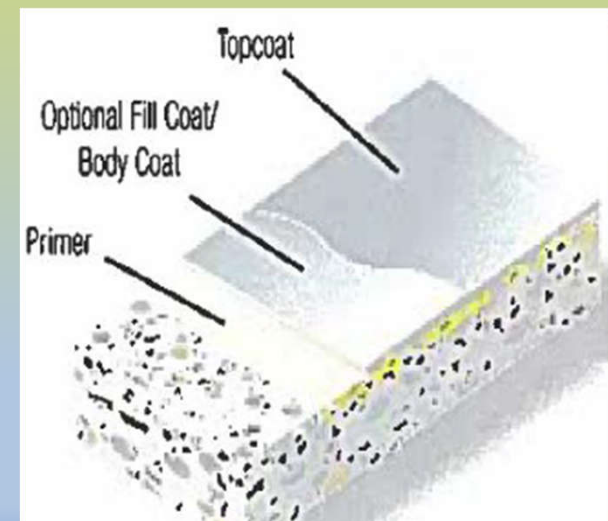
- Do not apply to wet surfaces
- Substrate must be structurally sound and free of bond inhibiting contaminants.
- During installation and initial cure cycle substrate and ambient air temperature must be at a minimum of 50°F (for lower temperature installation contact the Technical Service Department).
- Concrete must have an effective vapor barrier.

Typical Physical Properties for Resuprime MVT only

Color	Clear
Mix Ratio A:B	Pre-packaged components Approximately 2:1
Pot Life	15 minutes
Solids, by weight	98% ± 2%, mixed
VOC (Volatile Organic Content) EPA Method 24	<100 g/L mixed; 0.83 lb/gal
Coverage: @ 8-10 mils WFT @ 16-20 mils WFT	180-200 sq. ft/gal 80-100 sq. ft/gal
Cure Time	Dry to Touch 4-8 hrs Recoat 10-12 hrs Light Traffic 18-24 hrs

Breathable Floor Coatings

- Functions like Gore-Tex®; lets moisture vapor escape through topcoat
- Eliminates need for moisture testing!
- Can be applied to green concrete
 - No need to wait 28 days to coat



- A. Analyzation
- B. Prep, Prep, Prep.
- C. Choosing the right primer
- D. Choosing the right system
- E.

Decorative to Industrial, Thin-Mil
to Troweled Mortar Systems,
Traffic coatings, mechanical room
coatings and dozens more.

- A. Analyzation
- B. Prep, Prep, Prep.
- C. Choosing the right primer
- D. Choosing the right system
- E. Choosing the right top coat

UV stability, Abrasion Resistance,
Chemical resistance, texture for
slip resistance, and more.

**What Concrete Floors are
candidates for protection at
your facility?**



SwedeBro
www.swedebro.com

Epoxy Pool Deck System



SwedeBro
www.swedebro.com

Industrial Epoxy Flooring



Decorative Urethane Cement



Epoxy Floor & Decorative Chips



SwedeBro
www.swedebro.com



Epoxy Floor System



SwedeBro
www.swedebro.com

Industrial Traffic Coatings



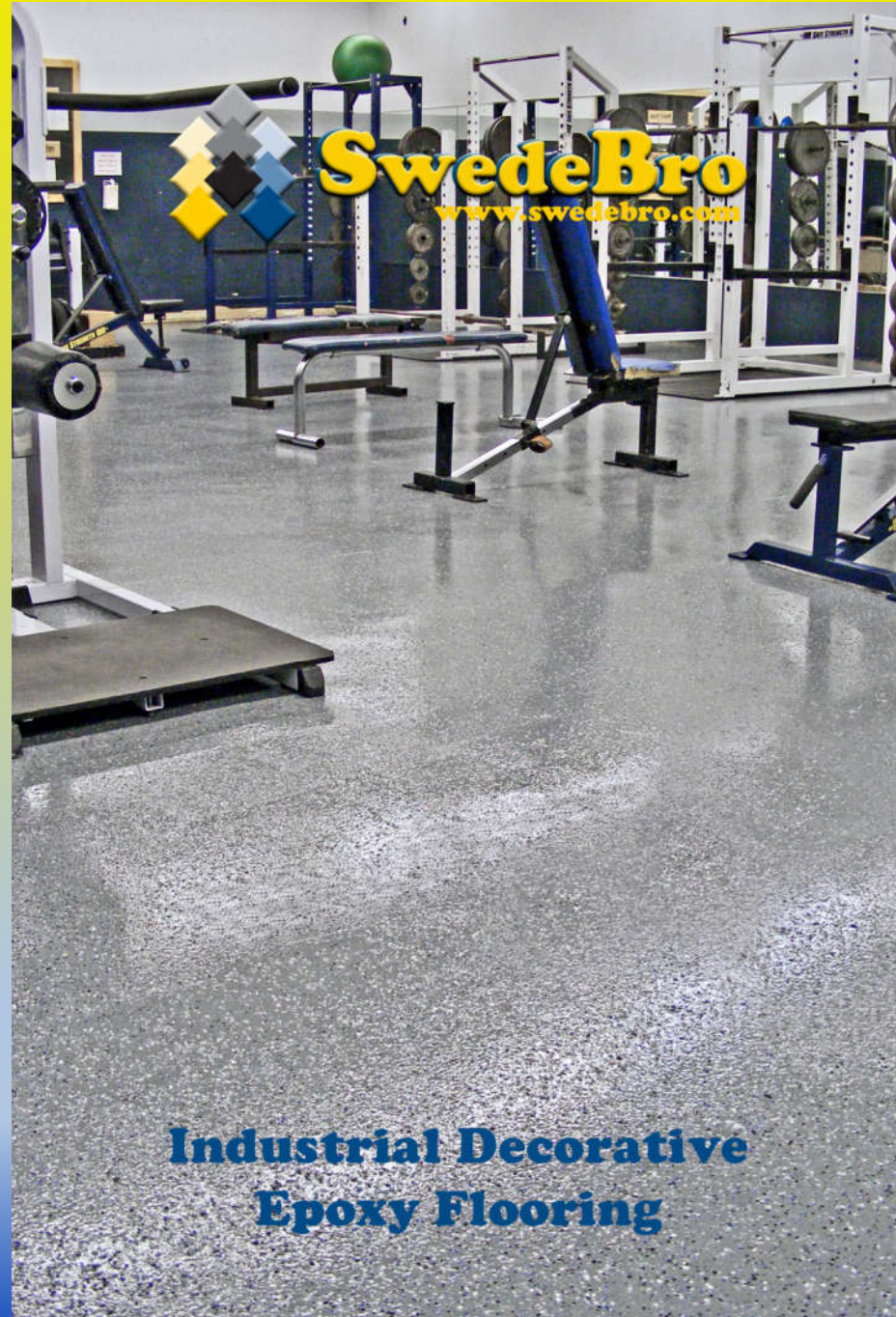
SwedeBro
www.swedebro.com

Decorative Epoxy Flooring

Epoxy with Decorative Chips & Logo



SwedeBro
www.swedebro.com



**Industrial Decorative
Epoxy Flooring**



SwedeBro
www.swedebro.com



Epoxy Floor System with Logo



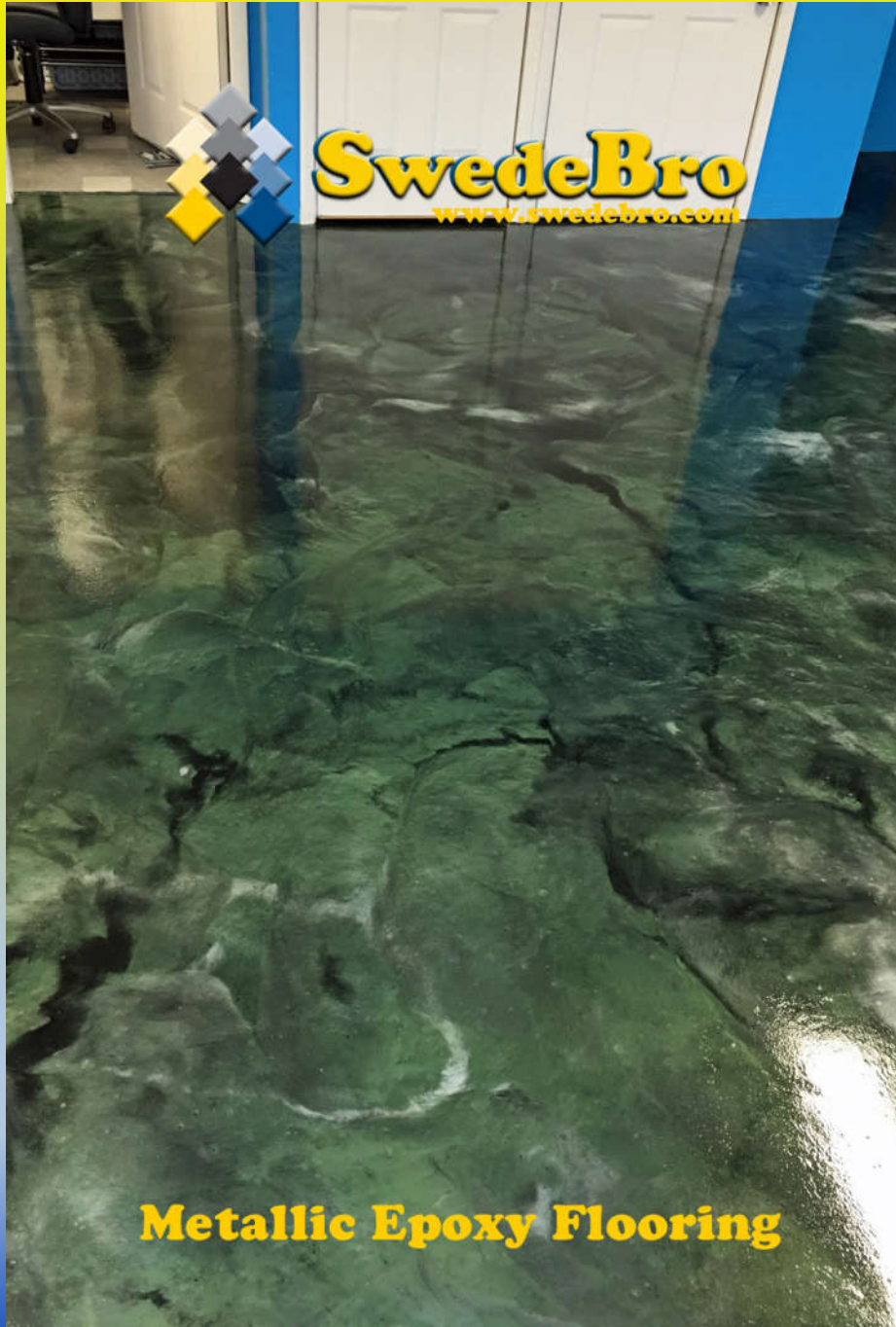
Ceramic Carpet Epoxy



SwedeBro
www.swedebro.com

Industrial Epoxy Coating

New Systems: Metallic Epoxy Flooring



Metallic Epoxy Flooring



SwedeBro
www.swedebro.com

Metallic Epoxy Flooring



SwedeBro

www.swedebro.com

Metallic Epoxy Flooring



SwedeBro
www.swedebro.com



Metallic Epoxy



Cleaning and Maintaining

5 Step process

Sweeping

Application

Agitation

Dwell Time

Removal

COMPETITIVE COMPLIANT CONVENIENT



Partnered Vendor Contract # F16-SWB

Service cooperatives, and their purchasing program, are an integral part of communities across the state. Empowered by legislation passed in 1976, eight service cooperatives in Minnesota created the Cooperative Purchasing Connection (CPC) which also serves participating agencies in North and South Dakota. More than 3,000 schools, cities, counties and nonprofits participate in CPC. To learn more, go to www.purchasingconnection.org.

LOCAL AND NATIONAL VENDORS MAKE UP CPC'S GROWING PORTFOLIO

Athletics	Supplies – Office and Classroom	Vehicles
Buildings and Grounds	Technology	Food Service
Security	Paper	Software and Web Based
Furniture	Copiers	Professional Services

CPC provides you with your own online marketplace, Express!
This unique benefit allows you to purchase products and services using only one login and password; no reference codes needed and discount pricing guaranteed. And you customize the approval process!
Go to www.cpcexpress.org to register now.



COMPETITIVE

More than 50 vendors provide significant discounts on quality products.

COMPLIANT

CPC's partnered vendors meet the competitive solicitation requirements so you can purchase off contracts without needing to bid on your own. That saves time and money.

Minnesota statute §123A.21 and 471.345 subdivision 15
North Dakota statute §54-40.3 of the North Dakota Century Code
South Dakota statute §5-18A-37

CONVENIENT

As a participating agency, you know and trust the cooperative purchasing program. You know from experience using a CPC contracted vendor saves staff time and resources.

Contact the CPC Team: www.purchasingconnection.org or 888-739 3289



SwedeBro

Richfield Public Works used CPC vendor SwedeBro to resurface their concrete floor. The process to use the contract took 20 minutes to save 20 hours of time and nearly \$20,000 on the project.

"We're very, very pleased with it."

Mark Hall – City of Richfield Operations Manager

Questions.



SwedeBro.com

A wide-angle photograph of a large, empty industrial or commercial building interior. The floor is highly reflective, mirroring the ceiling lights and the large glass windows. The windows are composed of many small panes, creating a grid pattern. The ceiling is high and features several rows of recessed lighting fixtures. The overall atmosphere is bright and clean.

estimating@swedebro.com